

SINGAPORE TATLER HOMES

THE INSIDER'S GUIDE TO LUXURIOUS LIVING



VIEW TO ALL
STRIKING ARCHITECTURE AND
BREATHTAKING VISTAS

MAR-MAY 10 | S\$8 (INCL GST)



LUSTRE CHIC DESIGNER SHELVING • **ACCESSORIES** LUXURIOUS TABLEWARE FIT FOR A KING • **FURNISHINGS** SALUTE TO POWER WOMEN DESIGNERS • **CHEF'S CORNER** SMART GADGETS. CLEVER KITCHENS • **ILLUMINATIONS** CREATIONS FROM PAST LIGHTING

HOMES

From resort chic to pared-back elegance –
This edition's home stories offer interiors with
luxury, comfort and a dose of panache

94 Tall, Dark & Handsome

104 Tranquil Chic

114 A Home For All Seasons

122 Lush Oasis

132 Stylish Expression

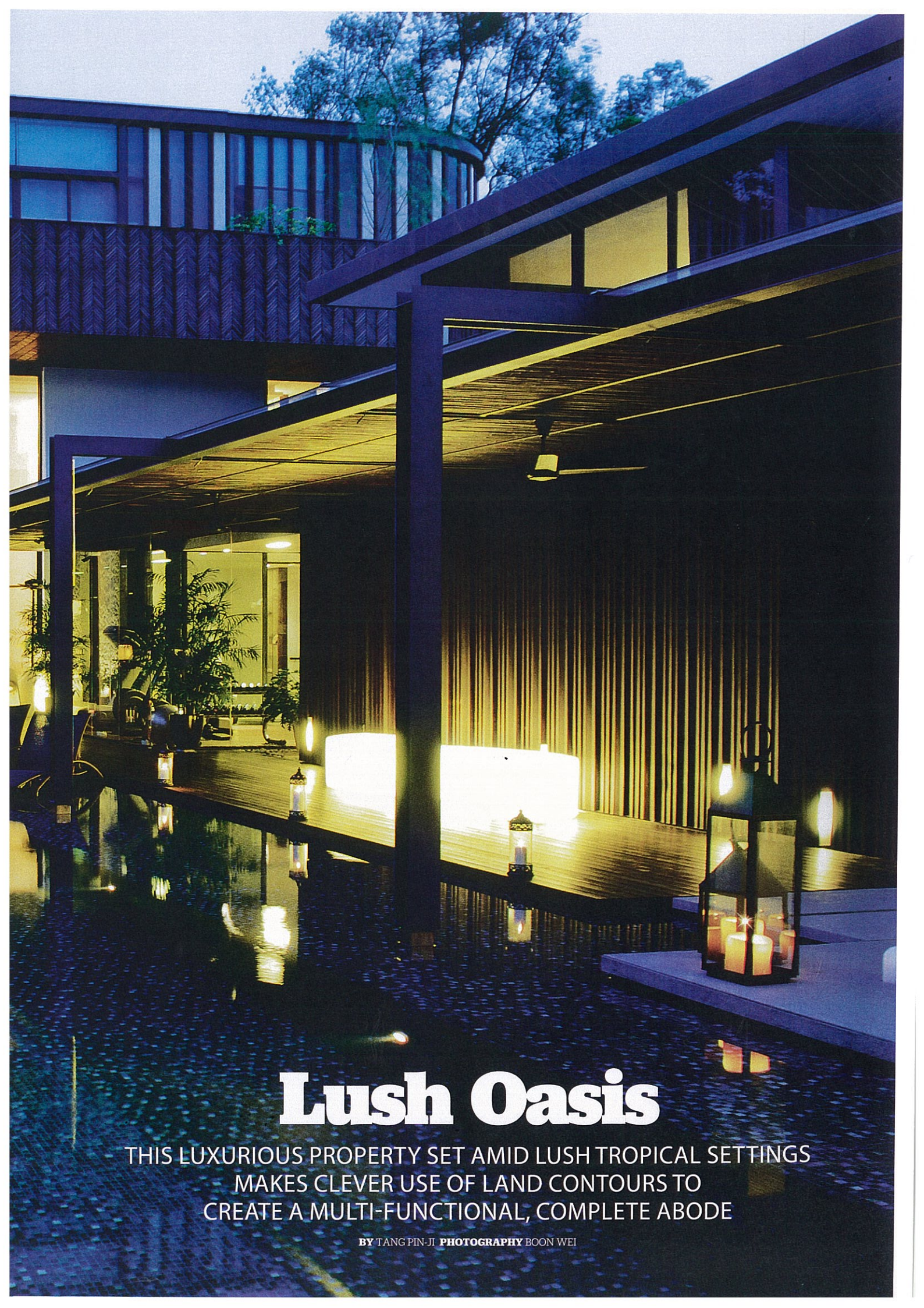
138 Larger Than Life



122



The home at twilight
— serene and chic



Lush Oasis

THIS LUXURIOUS PROPERTY SET AMID LUSH TROPICAL SETTINGS
MAKES CLEVER USE OF LAND CONTOURS TO
CREATE A MULTI-FUNCTIONAL, COMPLETE ABODE

BY TANG PIN-JI PHOTOGRAPHY BOON WEI



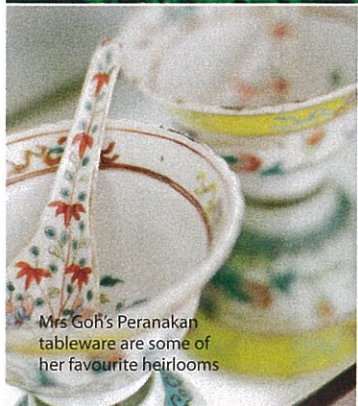
The main living room is spacious and light-filled



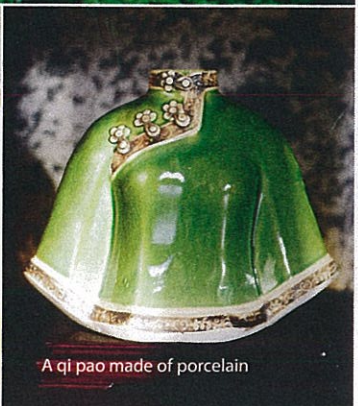
View of the lap pool from the home's third floor



The Balinese statue ensconced in lush vegetation



Mrs Goh's Peranakan tableware are some of her favourite heirlooms



A qi pao made of porcelain

Stepping into the Gohs' family home in Bukit Timah, one cannot help but wonder just how much more there is to the 27,000-square foot bungalow than meets the eye. The house, which sits on a dramatic terrain, was carefully layered and segmented into several components interspersed with lush greenery, without compromising on privacy, natural lighting and space for the homeowners.

The result? A modern, tropical resort home rich in texture, with cross ventilation features that link different parts of the house while giving it an airy feel. "There isn't any fixed style [for the house]. It is very much inspired by nature of the spaces shaped by the architecture and how to enhance it to a more intimate level," says Aamer Taher, principal of Aamer Architects who was also the design architect of this project.

He adds, "We wanted to bring the language of the architecture inside as much as possible, which is why in some spaces you can see how external features are repeated inside, like feature cladding and material."

Aamer, together with Khairudin Saharom, senior/project architect in charge of the development, took nearly two years to finish working on the house. The architects were given the general fengshui requirements for the house, which included layout and colour palette. Each space was then designed according to its intended use and the mood that they wanted to create in that space.

Though the architects had no fixed style for the home's interior, some stand-alone rooms were designed around a certain theme as they could afford a little bit of fun and diversity in interior design. Examples include the girls' bedrooms and the chill-out room above the spa imbued in rich Moroccan hues with colourful mosaic pieces on its windows.

With an eye for aesthetics and a love for poring through design publications, coupled with inspirations from her travels, Mrs Goh enjoyed worked closely with Aamer and Khairudin to come up with design ideas for the house that were "a little bit different". As a result, many custom-made pieces around the house were pretty unique in their form, such as the brown round sofa couch that sits in



A striking Valcucine Kitchen system by Hugo Kitchen



The informal dining area has plenty of nature all around



The Gohs can workout at their home gym



The home's very own spa!

The formal dining area is situated beside the koi pond



Dramatic lighting in the formal dining area

the living room and the enormous square chandelier that hangs above it.

Even timber cladding on one of the exterior walls of the house was laid out in a herringbone style, instead of a conventional horizontal or vertical style. According to Aamer, this herringbone feature helps to trap air pockets and reduce concrete heat absorption around the house. This was especially important as the house faced west due to fengshui requirements, and was thus prone to absorbing heat.

More was done around the house to tackle the heat issue in the form of generous overhangs, deep courtyards, lush landscaping, a central breezeway with timber louvres and by including low-emissivity glass where needed.

It therefore comes as no surprise that the family enjoys hanging out at the outdoor deck adjacent to the dry kitchen. This open-plan kitchen system by Valcucine from Hugo Kitchen affords a luxurious cook-in experience that allows you to take in the view of the pond teeming with koi. The informal dining area is set amid lots of greenery, also becomes the perfect spot for lounging in; and its long table is

The informal dining area is set amid lots of greenery, also becomes the perfect spot for lounging in

where the family tucks into their daily meals. Mrs Goh enthuses, “It is sheltered but breezy and cool here, especially after a rain. Early in the mornings we can hear birds chirping from the trees nearby and sometimes, we even see squirrels running along the walls!”

Also situated within the outdoor deck is circular formal dining area, which features a huge round dining table that measures 2.8 metres in diameter and sits between twelve to fourteen people. Interestingly, the koi pond surrounds the circular dining zone, thereby providing picturesque views when guests have their meals. At one end of the koi pond lies a series of stone steps that lead to the lap pool area one level below, where the Jacuzzi, gym and spa — consisting of a massage room, steam room and sauna — are located.



A wooden-decked walkway replete with LED lights



Mrs Goh's walk-in wardrobe even affords a jewellery cabinet



A feminine theme for the daughter's room



The master bedroom's light-filled bathroom



Luxurious touches of floor-to-ceiling silk panels and ornate suspension glass lamps reside in the master bedroom

Having to tear down the original house and rebuild it according to the number of rooms and spaces as commanded by the brief, the team was faced with the challenge of building a house that did not appear too massive in its physicality. Aamer opines, “There is always a danger of making a house this huge look cold and intimidating. However, with massing and proper layout, together with the right choice of materials and colours, such a commodious space can still incorporate homeliness and warmth.”

At the same time, in rebuilding the house, the architects also had to connect the spaces smoothly on the terrain of steep slopes and irregular contours without imposing too much on the site conditions. But this challenge was turned into an opportunity when they realised that they could layer the zones of the house and space out rooms by stacking them on the terraces, instead of on top of each other.

Works of art found in the couple’s home reflect their love for collecting art pieces either from charity events, or during their travels abroad. The most outstanding piece probably has to be the Buddha statue that was acquired from

Bali. Set against a bamboo backdrop in a natural landscape, it provides a focal point to look out at from the walkway that connects the dry kitchen and outdoor deck to the rest of the house.

The Gohs frequently entertain friends and family, hence it was important that their house was designed as the ultimate entertainment pad with generous sprawling lawns, outdoor decks and pockets of informal mingling spaces. Lighting around the house was also programmed to switch effortlessly between different modes to suit different moods. The innovative Slide furniture — of tables and balls that float on the koi ponds and swimming pool — came from Hugo Kitchen, provide interesting talking points when guests pop by.

All in all, the interior design of their bungalow has met Mrs Goh’s expectations, even exceeding that of her husband’s. She loves the home’s openness, elements of tropical living, natural breezes and light flowing through, without having her privacy affected. Aamer says that the house is very satisfying for the family, so much so that they long to return home while on holiday! For the clever architects, “...achieving this sense of completeness is one of the fundamentals in designing a home”. **H**