



**brief** Unlike the other two, this one is already a detached house. 'The owners, a nice, unassuming young couple with three young children, wanted simply to upgrade the bungalow they bought.' In working out the changes, Aamer noted the 'weak entrance' and 'the patio to the right of the entrance that had no privacy'. Also, 'the bathrooms were too small and the rooms did not have proper usable balconies.'

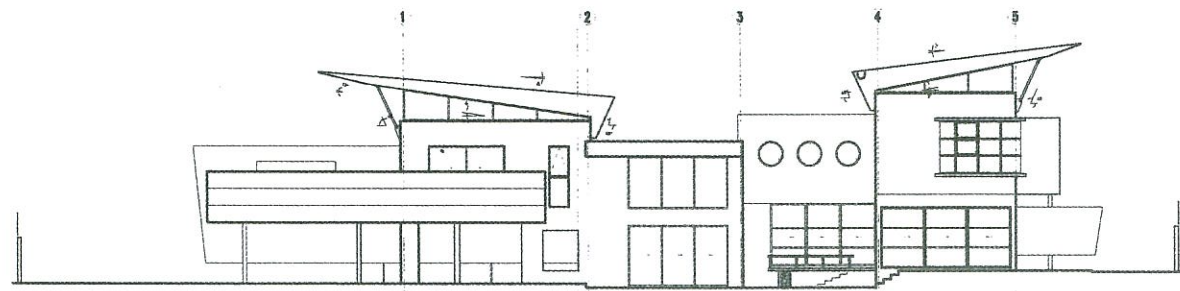
**concept** As in the Hua Guan Ave house (*see previous pages*), feature walls and curving planes are played with in the vocabulary that shapes this house. A directional 'floating wall' cuts right through the front portion of the house, and forms a quadrant with the elliptical arc inscribed at the front as a balcony wall that embraces the master suite on the second floor (**a, b and c**). The house is defined as two blocks at the front and the rear block, and joined in the middle by a double volume living room. The metal roofs that cap the two blocks containing the main areas and private zones respectively are propped up at an angle to form two opposing trajectory planes – a vivid expression of the architect's flight of fancy, perhaps! ▶



The house before reconstruction.



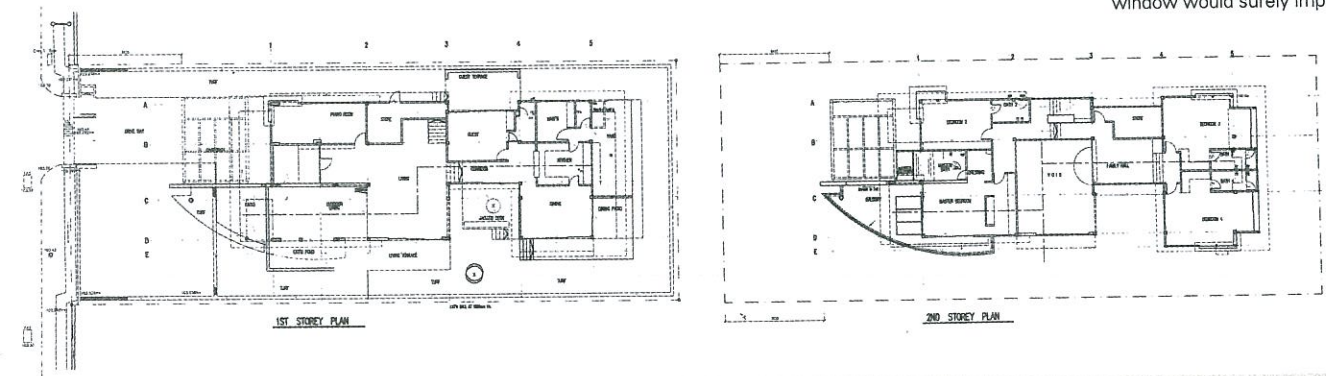




ELEVATION 2



Master bath on the other side of the 'floating wall' that slices right into the master bedroom on the second floor. (Some plantings at the small balcony space directly outside the window would surely improve this room!)



**description** To direct visitors to the entrance and at the same time screen off the patio, we created a "floating" wall that starts in the living room and extends out to the front of the house – the visitor is directed into the heart of the double volume living room without engaging the two patios (c). The wall 'floats' about a meter above the ground, partially screening off the patios behind it but yet allowing the engagement of these spaces. A row of recessed wall lights, like runway lights, reinforces the directional path into the house. The threshold of the entrance is emphasised with a glass bridge that crosses over a moat surrounding two sides of the living patio. To further enhance the 'floating' sensation, polished black granite is used as flooring for the double-volume indoor living (d and e) – 'the reflectivity of the black granite mirrors the floating wall and extends the space into a vertical abyss below your feet.' In place of a conventional front door are seamless glass panels. Even the shoe storage unit, running parallel to this wall, is 'floated'. How the 'floating' wall is engineered is not entirely a secret: holding it in place are 'counter balances' – on one side the balcony terrace for the master suite upstairs, and on the other the tubular steel beams that frame the transparent car porch roof. The curve wall is higher than usual for a balcony so that it screens off the master room, creating a private terrace (f). Part of the floor of this terrace is glassed to allow light and a visual connection to the patio below. 'Hard chunky corners' of the three bedrooms (see 2nd storey floor plan) are knocked away and replaced with pop-out clear windows 'to provide interesting seat windows' for the children who occupy these rooms. ▀

**8 COLDSTREAM AVE** – addition and alteration  
**Floor area** 520m<sup>2</sup> (5,600ft<sup>2</sup>)  
**Construction cost** \$686,000 (\$122 psf)  
**Construction time** 10 months

CONSULTANTS/SPECIALISTS

**Architect** AAMER TAHER DESIGN STUDIO  
 Amer Taher  
 Pamela Oei  
**Structural engineering** EXECUTIVE DECISIONS INC.  
**Contractor** TDS CONSTRUCTION  
**Airconditioning** SANYO by ASICS AIRCONDITIONING  
**Pond** GALILEAN WATERS  
**Jacuzzi** MONARCH SPA  
**Solar heater** SOLARHART

MATERIALS

**Roofing** BHP Lysaght (colorbond metal 'kloop-look')  
**Car porch roof** Twin-wall polycarbonate sheeting on steel structure  
**Walls** Bricks, plaster and paint  
**Windows/doors** Powder coated aluminium frames  
**Cabinetry** Beech veneer  
**Railings** Chengai hardwood top rail and painted mild steel  
**Walls** Solnhoffen Stone (Natursteinhaus Pte Ltd)  
**Driveway** Solnhoffen Stone / classic matt white and matt grey mosaic  
**Outdoor living** Solnhoffen Stone / classic matt white and matt grey mosaic  
**Patio** Solnhoffen Stone / classic matt white and matt grey mosaic  
**Master bath** Solnhoffen Stone / classic matt white and matt grey mosaic  
**Flooring** Black granite  
**Living room** Black granite  
**Outdoor living** Teak long strips  
**Dining** Teak long strips  
**Master bedroom** Black slate; inset with skylight of 19mm tempered glass  
**2nd storey balcony** Black slate; inset with skylight of 19mm tempered glass